

AMERICAN TOURISTER

SINCE 1933



AUSTRALIA CATALOGUE
JANUARY – JULY 2022

WWW.AMERICANTOURISTER.COM.AU

AMERICAN TOURISTER

SINCE 1933



TRUSTED GLOBALLY SINCE 1933

In 1933 founder Sol Koffler put his life savings into starting a luggage company in Providence, Rhode Island. His aim was to create a tough suitcase that could sell for a dollar.

As air travel soared over the years, lighter and durable luggage became more in demand. With this demand, American Tourister continued to deliver great luggage into the market through experimenting with new materials to make the world's first super durable moulded luggage. In the 1960's American Tourister became the first company to 'flight test' their bags with flight attendants from major airlines. The company also responded to the shift in demand for softside durable cases that could withstand even the toughest quality critic, a gorilla.

In 1993, American Tourister was acquired by Samsonite, marking the union of the world's great luggage brands.

AMERICAN TOURISTER

SINCE 1933



THE BRAND NOW

American Tourister is the world's second largest luggage brand*. Famous for its award-winning designs, it's been endorsed by some of the world's biggest celebrities, and loved by millions of travellers globally. It continues to invest millions of dollars into keeping its strong brand presence.

*Euromonitor Report 2019 - Core luggage, excluding bags.



CONTENTS

HARDSIDE LUGGAGE	7
SOFTSIDE LUGGAGE	17
BACKPACKS & DUFFLES	21
TRAVEL ACCESSORIES	29
PRODUCT INFORMATION	37
AUTHORISED SERVICE CENTRES	38
CONTACTS	39
USAGE RIGHTS	41
SOCIAL MEDIA	41

HARDSIDE LUGGAGE



A998 LITEVLO

THE LIGHTEST **BIG** CASE

Premium TSA Locking System



Dual Wheel Spinner



Divider & Straps



**10 YEAR
GLOBAL WARRANTY**

Product assets are available for download at the below link:

[Product Images](#)

[Lifestyle Images](#)

[Videos](#)

Expandable



Lightweight Frame



131504

55CM SPINNER EXP

55 x 35 x 25/27 cm – 40/44L – 2.3kg

BLACK/TURQUOISE 5 400 520 045 560
BODEGA BLUE/ORANGE 5 400 520 045 874



131505

69CM SPINNER EXP

69 x 47 x 30/31 cm – 84/90L – 3.1kg

BLACK/TURQUOISE 5 400 520 045 577
BODEGA BLUE/ORANGE 5 400 520 045 881

ONLY 4KG



131506

82CM SPINNER EXP

82 x 56 x 35/36 cm – 138/145L – 4kg

BLACK/TURQUOISE 5 400 520 045 584
BODEGA BLUE/ORANGE 5 400 520 045 898



BLACK/TURQUOISE
2491



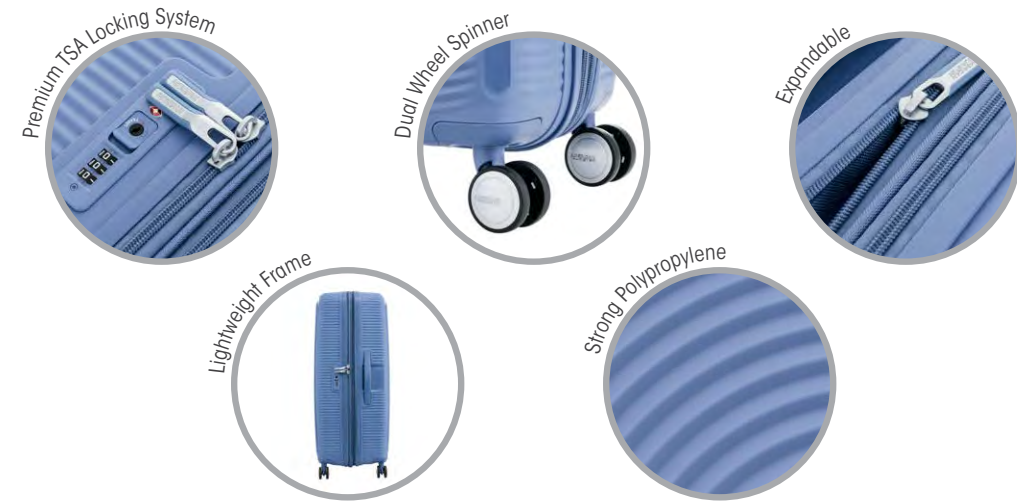
BODEGA BLUE/ORANGE
8685



7365
CURIO



THE AWARD-WINNING DESIGN



10 YEAR
GLOBAL WARRANTY

Product assets are available for download at the below link:

- [Product Images](#)
- [Lifestyle Images](#)
- [Videos](#)



87999
55CM SPINNER EXP
55 x 35 x 25/28 cm – 40/45L – 2.7kg

BLACK	5 414 847 763 601
MINT GREEN	5 414 847 956 300
DENIM BLUE	5 414 847 866 128



86229
69CM SPINNER EXP
69 x 49 x 29/32 cm – 79/88L – 3.7kg

BLACK	5 414 847 751 455
MINT GREEN	5 414 847 956 287
DENIM BLUE	5 414 847 866 005



86230
80CM SPINNER EXP
80 x 56 x 33/36 cm – 122/137L – 4.6kg

BLACK	5 414 847 751 493
MINT GREEN	5 414 847 956 294
DENIM BLUE	5 414 847 866 043



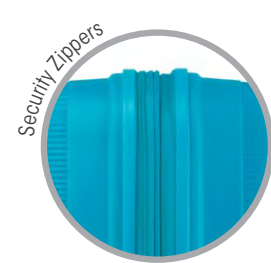


B505 INSTAGON

THE COMPLETE TRAVEL PACKAGE



USB Charging Port**



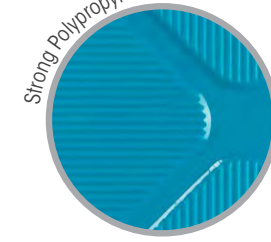
Security Zippers



Suspension Wheels



Expandable



Strong Polypropylene



**10 YEAR
GLOBAL WARRANTY**

Product assets are available for download at the below link:

[Product Images](#)

[Lifestyle Images](#)

[Videos](#)



135004

55CM SPINNER EXP

55 x 36 x 24/27 cm – 37/42L – 2.9kg

JET BLACK	5 400 520 087 553
TURQUOISE	5 400 520 091 222
PASTEL BLUE	5 400 520 091 116

^CHARGER NOT INCLUDED
*ON CABIN ONLY



135005

69CM SPINNER EXP

69 x 49 x 31/33 cm – 80/89L – 3.7kg

JET BLACK	5 400 520 087 560
TURQUOISE	5 400 520 091 246
PASTEL BLUE	5 400 520 091 239



135006

81CM SPINNER EXP

81 x 55 x 35/37 cm – 123/139L – 4.9kg

JET BLACK	5 400 520 087 577
TURQUOISE	5 400 520 091 260
PASTEL BLUE	5 400 520 091 253



JET BLACK
1465



TURQUOISE
1879



PASTEL BLUE
8365



8982
SUNSIDE

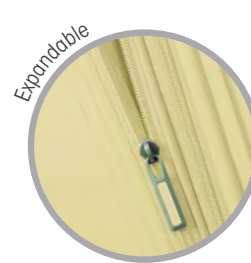
UNBEATABLE VALUE



Premium TSA Locking System



Dual Wheel Spinner



Expandable



Functional Internal Pockets



Lightweight Frame



10 YEAR
GLOBAL WARRANTY

Product assets are available for download at the below link:

- [Product Images](#)
- [Lifestyle Images](#)
- [Videos](#)



114140
55CM SPINNER EXP
55 x 40 x 20/25 cm – 38/46L – 2.8kg

BLACK	5 414 847 907 371
AERO TURQUOISE	5 414 847 907 418
MOONLIGHT NAVY	5 400 520 091 703
PASTEL YELLOW	5 400 520 077 592



107527
68CM SPINNER EXP
68 x 46 x 28/32 cm – 74/85L – 3.6kg

BLACK	5 414 847 861 765
AERO TURQUOISE	5 414 847 861 802
MOONLIGHT NAVY	5 400 520 091 680
PASTEL YELLOW	5 400 520 077 585



128767
81CM SPINNER EXP
81 x 56 x 33/36 cm – 122/139L – 4.4kg

BLACK	5 400 520 022 905
AERO TURQUOISE	5 400 520 022 936
MOONLIGHT NAVY	5 400 520 092 120
PASTEL YELLOW	5 400 520 077 608



BLACK
1041



AERO TURQUOISE
4842



MOONLIGHT NAVY
8686



PASTEL YELLOW
1661

SOFTSIDE LUGGAGE

A938

APPLITE 4SECURITY

FREE LOCKABLE LUGGAGE COVER



**10 YEAR
GLOBAL WARRANTY**

Product assets are available for download at the below link:

[Product Images](#)

[Lifestyle Images](#)

[Videos](#)



130956

50CM UPRIGHT

50 x 33 x 22 cm – 38L – 1.9kg

BLACK/GREEN	5 400 520 039 156
BODEGA BLUE	5 400 520 038 845
LIGHTNING GREY	5 400 520 039 163

130960

55CM SPINNER EXP

55 x 35 x 25/28 cm – 38/40L – 2.1kg

BLACK/GREEN	5 400 520 039 255
BODEGA BLUE	5 400 520 038 883
LIGHTNING GREY	5 400 520 039 262

130961

71CM SPINNER EXP

71 x 46 x 31/34 cm – 76/85L – 2.6kg

BLACK/GREEN	5 400 520 039 286
BODEGA BLUE	5 400 520 038 890
LIGHTNING GREY	5 400 520 039 279

130962

82CM SPINNER EXP

82 x 49 x 34/37 cm – 116/129L – 2.9kg

BLACK/GREEN	5 400 520 039 330
BODEGA BLUE	5 400 520 038 906
LIGHTNING GREY	5 400 520 039 347

MEETS THE VIRGIN DOMESTIC
105CM AIRLINE REQUIREMENT

*AVAILABLE FOR 71CM & 82CM SPINNER



BLACK/GREEN
1061



BODEGA BLUE
0459



LIGHTNING GREY
0552

LOCKABLE LUGGAGE COVER

MADE FROM RECYCLED FABRIC

NO MORE PLASTIC WRAPPING YOUR SUITCASE!



PROTECT AGAINST:

- TAMPERING
- THEFT
- SCRATCHES



1.

Place the cover over your suitcase (with the American Tourister logo side over the front of the suitcase).



2.

Insert the thick fabric strip through the metal hole. Ensure the velcro patches match and are firmly pressed against each other.



3.

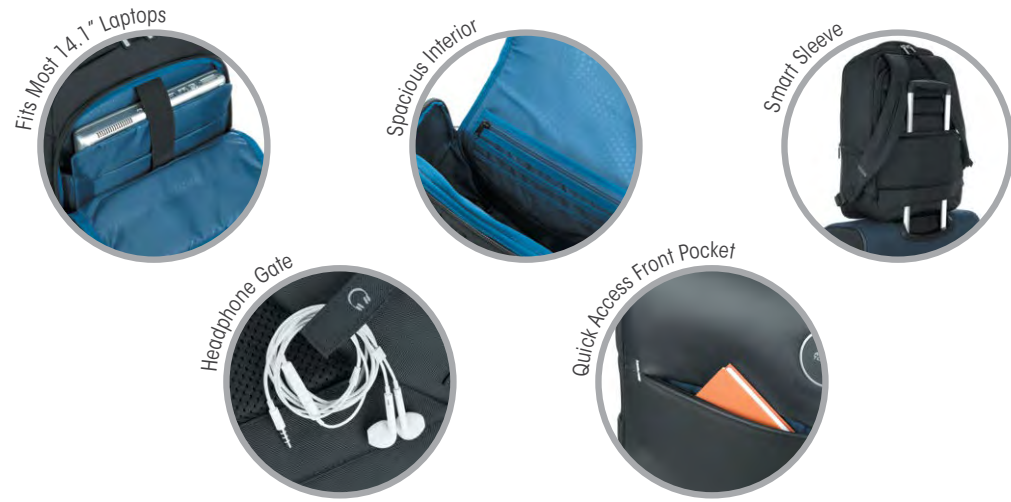
Under the fabric cover, place a padlock and lock it. A TSA padlock is recommended.

Padlock is not included with the cover – **great add-on selling opportunity for retailers!**

BACKPACKS & DUFFLES

7365 CURIO BACKPACK

THE PERFECT CROSS-SELLING OPPORTUNITY




**1 YEAR
GLOBAL WARRANTY**

Product assets are available for download at the below link:
[Product Images](#)
[Videos](#)



108930
BACKPACK 2
46 x 33 x 16 cm – 23L – 0.8kg
BLACK 5 414 847 874 185



9745 WORK:OUT

FROM WORK/UNI TO SPORTS




**1 YEAR
GLOBAL WARRANTY**

Product assets are available for download at the below link:
[Product Images](#)
[Lifestyle Images](#)



119789
BACKPACK 1
48 x 31 x 21 cm – 30L – 0.9kg
BLACK 5 414 847 934 797





A678

CARTER NEW

AVAILABLE MAR 2022

THE URBAN TRAVELLER



1 YEAR
GLOBAL WARRANTY

Access to product assets
are available for download
at the below link:

[Product Images](#)
[Lifestyle Images](#)



128129
BACKPACK 01
42 x 29 x 18 – 20L – 0.5kg
NAVY 5 400 520 018 724



NAVY
1596

A676

RUDY NEW

AVAILABLE MAR 2022

A MODERN EVERYDAY BACKPACK



1 YEAR
GLOBAL WARRANTY

Product assets are available for download at the below link:

[Product Images](#)
[Lifestyle Images](#)



128127
BACKPACK 01

42 x 30 x 14 cm – 21L – 0.4kg

MIDNIGHT BLUE 5 400 520 106 070
LIGHT ROSE 5 400 520 106 063



MIDNIGHT BLUE
1549



LIGHT ROSE
1512

1451

X-BAGS TRAVEL DUFFLE

CABIN SIZE



1 YEAR
GLOBAL WARRANTY

Product assets are available for download at the below link:

[Product Images](#)



50863

TRAVEL 1 DUFFLE

55 x 30 x 30 cm – 45L – 0.9kg

GUN METAL 8 901 836 130 997

50864

TRAVEL 1 DUFFLE

67 x 31 x 33 cm – 58L – 1.0kg

GUN METAL 5 400 520 069 429



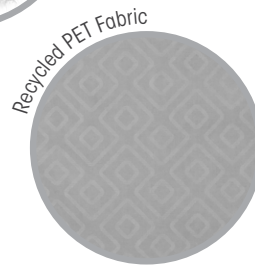
GUN METAL
1422

TRAVEL ACCESSORIES

4707

ANTIMICROBIAL LUGGAGE COVER

ANTIMICROBIAL PROTECTION



**1 YEAR
GLOBAL WARRANTY**

Product assets are available for download at the below link:
[Product Images](#)



138619
SMALL LUGGAGE COVER
46 x 33.5 x 24 cm – 0.075kg

GREY 5 400 520 122 117



138620
MEDIUM LUGGAGE COVER
62 x 43 x 32 cm – 0.13kg

GREY 5 400 520 122 322



138622
LARGE / X-LARGE LUGGAGE COVER
72 x 53 x 32 cm – 0.1kg

GREY 5 400 520 122 346



GREY
1408

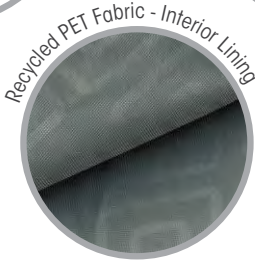
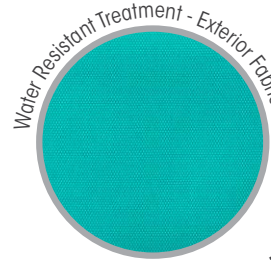
LUGGAGE COVER FITTING LIST

Collection		Luggage Cover		
		Small	Medium	Large / X-Large
Airconic	55cm Spinner	•		
	67cm Spinner		•	
	77cm Spinner			•
Instagon	55cm Spinner	•		
	69cm Spinner		•	
	81cm Spinner			•
Curio	55cm Spinner	•		
	69cm Spinner		•	
	80cm Spinner			•
Litevlo	55cm Spinner	•		
	69cm Spinner		•	
	82cm Spinner			•
Sunside	55cm Spinner	•		
	68cm Spinner		•	
	77cm Spinner			•
Applite 4Security	50cm Upright	•		
	55cm Spinner	•		

4707

ANTIMICROBIAL STORAGE POUCH

ANTIMICROBIAL PROTECTION



1 YEAR
GLOBAL WARRANTY

Product assets are available for download at the below link:
[Product Images](#)



138623

STORAGE POUCH

11.5 x 21 x 1 cm – 0.04kg

BLACK 5 400 520 120 939
TURQUOISE 5 400 520 120 953



BLACK
1041



TURQUOISE
1879

1348

SMART GARMENT BAG

FOR THE PRO BUSINESS TRAVELLER



2 YEAR
GLOBAL WARRANTY

Product assets are available for download at the below link:
[Product Images](#)



56276

SMART GARMENT BAG

44 x 56 x 16 cm – 45L – 0.9kg

BLACK/YELLOW 5 414 847 416 521



BLACK/YELLOW
1086

CONTACT US & INFORMATION



PRODUCT INFORMATION

DIMENSION

The dimensions shown are the outside dimensions, including handles, wheels, bottom glides, side pockets and other external components.

All volumes are measured in litres. These measurements are carried out in Samsonite laboratories using Samsonite measuring procedures.

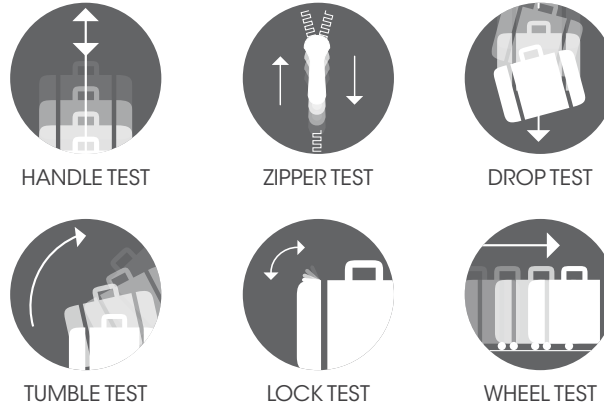
Many luggage brands use a mathematical formula to calculate a bag's volume (Volume of bag = H x W x D)/1000 litres). While logically sound, this method always overestimates volume. That's why at American Tourister, we use the Pellets Method. Compared to the mathematical formula, the Pellets Method provides the correct, realistic volume.

OTHERS	AMERICAN TOURISTER PELLETS METHOD	
VOLUME OF BAG = (H x W x D)/1000 LITRES E.G. CABIN SIZE BAG - 43 LITRES	LOAD BAG WITH POLYPROPYLENE PELLETS	VOLUME OF BAG = VOLUME OF THE PELLETS E.G. CABIN SIZE BAG - 37 LITRES

Note that all measurements and weights are approximate. Colours may vary in image as opposed to actual product.

QUALITY TESTING

We deliver the quality. You enjoy the journey. You might not have given it any thought, but each American Tourister product undergoes the most stringent controls and tests before it goes on the market.



WARRANTY

All American Tourister luggage products come with a 10-year truly global warranty against manufacturing faults and defects.

American Tourister bags and travel accessories have a 1-year or 2-year global warranty against manufacturing faults and defects, as specified in American Tourister dealer catalogue January - July 2022.

For further information contact customer service on 1800 331 690 or head to americantourister.com.au



AUTHORISED SERVICE CENTRES

AUSTRALIA

VICTORIA

WALKALONG

515 Camberwell Road, Camberwell, VIC 3124
P 03 9889 2800

GREGORY'S BAG & SHOE REPAIRS

6 Leake St, Essendon, VIC 3040
P 03 9379 6137

THE REPAIR PLACE

423-425 Springvale Road, Forest Hill, VIC 3131
P 03 9894 7869 F 03 9894 3877

QUEENSLAND

BRISBANE LUGGAGE

3/265 Blaker Road, Keperra, QLD 4054
P 07 3352 7799

THEO'S SHOE HOSPITAL

56 Shields St, Cairns, QLD 4870
P 07 4051 1334

ADDWEST SHOE AND LUGGAGE REPAIRS

104 Andalusian Drive
North Maclean, QLD 4280
P 07 3844 5416

BROADBEACH BAG AND SHOE REPAIRS

Shop 22 Niecon Plaza,
22 Albert Street, Broadbeach, QLD 4218
P 07 5539 0072

SOUTH AUSTRALIA

THE LUGGAGE PLACE

2/142 Richmond Road, Marleston, SA 5033
P 08 8231 4884 F 08 8231 2119

NORTHERN TERRITORY

JOE POSTL

PO Box 291, Palmerston, NT 0831
P 08 8932 9244

NEW SOUTH WALES

CUSTOM LUGGAGE

317 Sussex Street, Sydney, NSW 2000
P 02 9261 1099 F 02 9261 1126

ACT

JOE'S BOOTS

Unit 2, 33 Jardine Street, Kingston, ACT 2604
P 02 6295 6162

TASMANIA

COUNTRY LEATHER

108 Elizabeth Street, Hobart, TAS 7000
P 03 6231 5082

WESTERN AUSTRALIA

LEATHER & LUGGAGE REPAIR

317 Walcott Street, North Perth, WA 6006
P 08 9443 1800 F 08 9443 1900

NEW ZEALAND

AUCKLAND

GEMMELL'S WORKSHOP

191 Symonds Street
Eden Terrace, Auckland 1010
P 09 309 5618

CHRISTCHURCH

BENNETTS SHOE SERVICE

Shop 5, 33 Lichfield Street,
Christchurch Central, Christchurch 8011
P 03 365 0457

WELLINGTON

LESVOS BAG & SHOE REPAIRS

Inside Wellington Railway Station
P 04 472 8430

CONTACTS

AUSTRALIA

HEAD OFFICE

5 Anzed Court,
Mulgrave, VIC 3170
P 03 9549 3444 | F 03 9549 3400
info.australia@samsonite.com

Warranty & Service

P 1800 331 690
info.australia@samsonite.com

NEW SOUTH WALES

Graham Warren
M 0418 378 702

WESTERN AUSTRALIA

12 Coney Drive,
Kewdale, WA 6105
P 08 9359 1766

TASMANIA

Waratah, 76 Bathurst Street,
Launceston, TAS 7250
P 03 6331 3682 | F 03 6331 9982

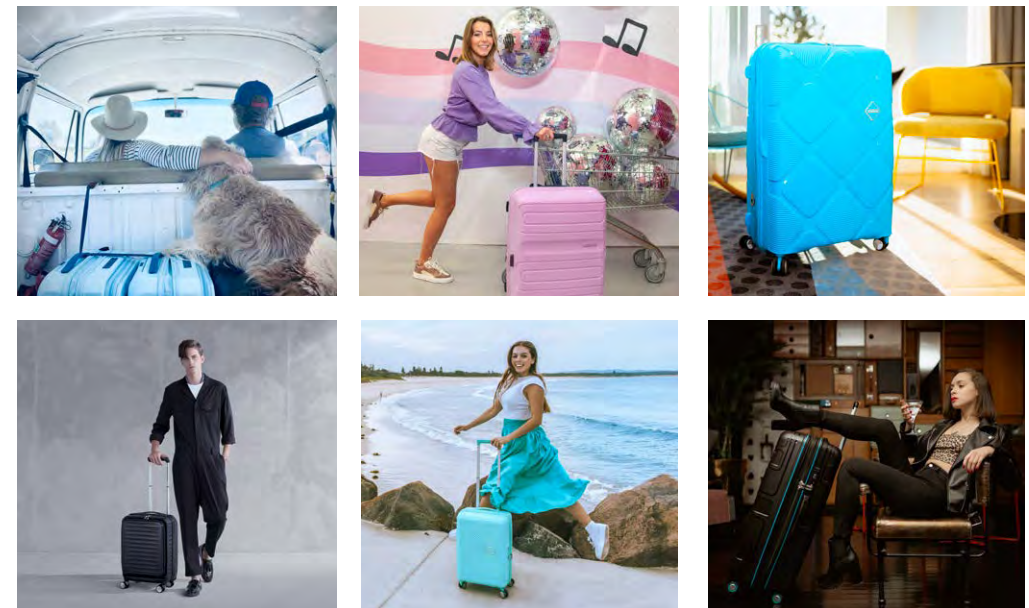
SOUTH AUSTRALIA

Stuart Hunt
M 0412 439 210



USAGE RIGHTS

Usage rights for the images and its expiry dates are listed in the individual file name. Please ensure your organisation adheres to these dates and its usage rights. If the images remain in your store or website after the expiry dates, there is a risk of legal claims seeking compensation by the company that owns the usage rights.



HELLO TRAVELLER! FOLLOW US ON SOCIAL MEDIA!



AmericanTouristerAustraliaNZ



@americantourister_AU



AmericanTouristerAU



americantourister.com.au/blog

